

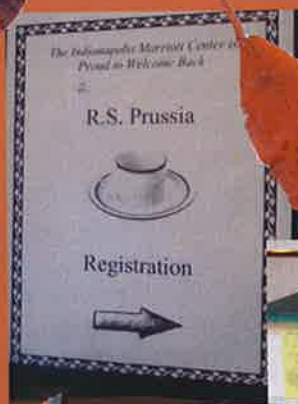
R.S. PRUSSIA

Issue Number 66

I.A.R.S.P.C. Inc.

October 2004

The 2004 Convention Highlights



In This Issue

Notes from the President	
<i>George Kandel</i>	2
Notes from the Secretary & Treasurer	
<i>Linn & Leslie Schultz</i>	3
From the Editor	
<i>Linda Titus</i>	3
Treasurer's Report	4
RS Prussia Zoo	4
Reception held by Chandler & Fischer	5
Ice Cream Social	6
Do It Yourself Auction	7
Board Meeting Minutes	8
First Time New Member Meeting	9
Welcome Meeting	9-10
Business Meeting Minutes	11
Sunday Board Meeting	12-13
Free Night Winners	13
Room to Room Viewing	14
The 2004 Shenanigan Report	
<i>Annette Hite</i>	15
Room to Room Viewing	16
From the Auction Committee	
<i>Joleen Passow</i>	17
Membership Recruitment	17
Room to Room Viewing	18
Hospitality Room	19
Room to Room Viewing	20
2004 Convention Programs	21
Room to Room Viewing	22
Room to Room Viewing	23
Banquet	24-26
2004 Convention Auction	27-30
New Members	31
Club News	32

*The International Association
of R.S. Prussia Collectors, Inc.*
Visit Us At
<http://www.rsprussia.com>

President

George Kandel, Indiana
260-868-5263
vinmark@fwi.com

Vice President

Terry Coy, Kentucky
502-244-5391
user258442@aol.com

Secretary

Leslie Schultz, Iowa
563-678-2658
lschultz@netins.net

Treasurer

Linn Schultz, Iowa
563-678-2658
lschultz@netins.net

Past President

Jenny Lou Huston, Texas
210-494-2791
phust@swbell.net

Directors

John Titus, Iowa
563-785-4438
imagesinink@iowatelecom.net

Marlene Howard, Ohio
513-777-1074
dhoward5@cinci.rr.com

Assid Corban, New Zealand
64-9-838-8947
orchids@xtra.co.nz

Wanda Faye Krick, Tennessee
931-393-1015
joekrick@charter.net

Grady Hite, North Carolina
336-924-8657
ahite@triad.rr.com

Richard Habenicht, Illinois
815-838-8456
reed1021@comcast.net

Recording Secretary

Theresa Newcomer, Pennsylvania
717-653-5976
chocset@aol.com

Historian

Mary Lou Bougher, Kentucky
502-247-7155
mlkbougher@msn.com

Newsletter Editor

Linda Titus, Iowa
Phone 563-785-4438
Fax 563-785-4673
PO Box 983
Durant, IA 52747-0983
imagesinink@iowatelecom.net

Web Page Editor

Ken Jinde, Canada
kenj89@rogers.com



Notes from the President

George Kandel



Conventions bring about exciting and unusual happenings. This year in Indianapolis was no exception. Upon arriving, we were full of anticipation, being greeted by familiar faces that had warm greetings. This changed quickly when we were faced with recruiting a hospitality room host. Illness had struck unexpectedly and a series of events left us needing someone to do the job. Up stepped Cole and Jo Reeves who volunteered. Room assignments were changed. Other early-arriving members joined in, and we were soon scurrying to put together the hospitality room. The Reeves coped with the adversities quite well and I am indebted to them for their willingness to assume the host job.

Other problems arose when members were not receiving confirmed reservations. A prior event using the hotel did not leave when they should have and it resulted in over booking. Nearby hotels were used and the Marriott made restitution and sent baskets of fruit to those inconvenienced. We who arrived on Tuesday and Wednesday were tested as to staying in a good frame of mind. For the remainder of the convention, we could not have been treated more warmly or friendly. Several told me that this was one of the best conventions they had attended. I believe both the hotel management and RSP officers had a learning experience. I do want to extend my thanks to Lisa Howe and Debbie

Matthews of the Marriott for helping us work through the difficulties.

Now for some other happenings. The auction viewing and the sale had a large attendance. The sale grossed over \$200,000 with the highest single sale being a cobalt demitasse set selling for \$10,000. Many items sold between \$2,000 and \$3,500. The Midwest Auctioneers and Realty, Inc. presented a \$2,000 check to the club and Jim Wroda gave an additional \$500 to be used in the development of new members. Linda Titus will be chairing a new committee for this purpose. Our forum session devoted most of its allotted time to this subject. I was impressed by the high interest and suggestions expressed by the membership. Please send Linda any constructive ideas you may have. She will be announcing the members shortly. You all can contribute by obtaining a new member. I challenge you to each recruit one this year.

The seminars by the Corbans and Sidmores were well presented very well attended. We are in need of seminars for next year. Terry Coy will again be in charge, so give him your ideas. He works hard at this, so please lend him a helping hand.

The business meeting was highlighted by the election of officers and board members. All officers and one board member (Faye Krick, 2nd) were re-elected. New board members are Grady Hite, N.C., and Rich Habenicht, IL. Lee

(Continued on page 3)

Newsletter Policy

This newsletter is the voice of the members of the International Association of R.S. Prussia, Inc. We welcome articles from members. We ask that articles be constructive and contribute positively to the welfare of the club and its members. The newsletter is printed four times a year. Publication mail dates are February 15, April 15, June 15, and October 15. Articles submitted for publication are due to the editor by the 15th of the month prior to publication and are subject to editing. (For example, items for the April issue would be due by March 15th) We look forward to hearing from you!

(Notes from President Continued from page 2)

Marple and Marvin Kraus completed their 2nd terms. The new board met Sunday morning and is functioning with contributions from all.

The Saturday night banquet was excellent and the entertainment was exactly that...primarily country but something for all. Winners of one free night lodging were Arden Hetletvedt, MI and Walter Holz, NJ. The raffle drawing winners were Carolyn Battle, TN, and Jenny Lou Huston, TX. Jenny Lou purchased tickets by mail which proves they do get in the drawing. Congratulations to all the winners!

The Heartland Club will host the 2005 Convention in Kansas City with C.L. Riley and Lois Walden as co-chairpersons. They have already made strides in making this an enjoyable site. It is at an Embassy Suite with breakfast included in the room rate. Take advantage of what they have for us.

In closing, I again want to express my appreciation to all who came this year. I hope we were able solve any initial discomfort you had and to have made it a memorable time. The Indiana club worked hard at making everyone feel welcomed. My officers worked overtime. Linn was doing two jobs well and Terry was everywhere. Gwyn, Frances, Bob Gollmar, and others contributed greatly. Above all, I thank my Heavenly Provider for giving me strength and patience in getting through the circumstances that occurred. We will shortly be approaching the holiday season. Let us give thanks in all that we do and say.

George

From Your Editor

Linda Titus



Dear Members,

My thoughts and prayers go out to all of our Florida members who have taken beating after beating with hurricanes this season. Hopefully the losses were minimal to any personal property (especially the Prussia!)

We missed several of our Prussia friends this year. Many people were unable to attend due to illness or family events. My prayers will also go out for those who are ill, may God give you a speedy recovery and allow you to be in Kansas City next year.

This was an expensive convention for me this year. My digital camera decided to die right at the start of the convention. Fortunately, John and I found a Best Buy nearby, and were able to purchase a similar camera for around the cost of a nice Man in the Mountain bowl, or Swan Scene piece, if you get my drift. Please enjoy the pictures in the newsletter, for they are not cheap!

I so enjoyed the articles that have been submitted this past year. I hope more of you will sharpen your pencils and get an article written for our newsletter. This participation makes the newsletter great and for many, it is the only connection to our club. So, keep up the good work, and those who have never submitted an article, please consider doing so. An article about how you found your first piece of Prussia is always a good place to start!

Have a Happy Holiday Season!

Linda Titus



Notes from the Secretary and Treasurer

Linn & Leslie Schultz

Another great International Convention is past, and already we are looking forward to next year. For those of you who attended this year's convention, thanks to any of you who were generous with your time in helping Linn, the treasurer, serve as both secretary and treasurer! For those of you who didn't attend this year's convention, you didn't know that Leslie remained in Iowa to assist our community when RAGBRAI (the Register's Annual Great Bike Ride Across Iowa) came through our small town of 497.

On Friday, July 30, about 8,000+ bicycle enthusiasts converged on our streets making their way to the overnight stop about 14 miles away. People from all over the world ride in this yearly event which celebrated its 32nd year

of traveling the roads of Iowa. The week-long ride starts at the Missouri River in western Iowa and concludes at the Mississippi River in eastern Iowa. This was the third time that the ride has come through our town, and community people joined together in one big effort to provide food, drink, entertainment, and a shady place for the bikers to stop and rest. The

picture, which appears with this article, was taken just outside our home—the bike route brought the bikers right to our corner on the west where they turned and

came past the south side of our house. Because Leslie operates a Bed & Breakfast in our home, she also had five overnight RAGBRAI guests. So again, thanks to anyone who helped Linn in his duties as both treasurer **and** secretary! Leslie still wishes that she could have been with everyone at the convention and misses all of you!



TREASURER'S REPORT

International Association of R. S. Prussia Collectors, Inc Financial Statement June 1, 2003 to May 31, 2004

Beginning Balance June 1, 2003:	\$ 27,132.03	Expenses:		
Income:		Convention 03	Banquet	\$ 7,208.10
Convention 04	Banquet		Free Night Drawing (3)	\$ 326.88
(to 5/31/04)	Breakfast		Hospitality Room	\$ 989.17
	Mugs		Entertainment	\$ 1,000.00
	Registration		Mugs	\$ 591.00
Convention 03	Auction		Equipment Rental	\$ 250.00
	Banquet		Raffle	\$ 11.12
	Breakfast		Refunds	\$ 245.00
	Mugs	Convention 04	Entertainment	\$ 1,000.00
	Raffle		Printing	\$ 344.40
	Registration		Raffle	\$ 850.00
	Do it yourself auction		Convention Buttons	\$ 200.00
	Miscellaneous		Convention Supplies	\$ 628.90
Member dues	<u>\$ 14,490.00</u>	Printing	General Printing	\$ 1,823.90
Total Income	<u>\$ 32,558.75</u>		Newsletters	\$ 9,436.50
		Postage	Roster Books	\$ 900.00
			Newsletter	\$ 2,456.97
		Misc	Postage	\$ 325.29
			Officer Supplies	\$ 1,165.77
			Professional Fees	\$ 53.50
			Surety Bond	\$ 125.00
			Telephone	\$ 26.53
		Total Expenses		<u>\$ 29,958.03</u>
		Net Change		<u>\$ 2,600.72</u>
		Ending Balance May 31, 2004		<u>\$ 29,732.75</u>



RS Prussia Zoo

Once again our members were generous in their donations to the R.S. Prussia Zoo. The animal zoo recipient this year was the Julian House. This is a house for battered and abused women and children. Representatives from the Julian House came to collect the animals from Cole Reeves (center photo) Saturday afternoon and George Kandel was on hand to help pack them (far right photo).

NOTE: This will be the last year for the R.S. Prussia Zoo.



Reception Held by Chandler and Fischer

A special treat for convention-goers this year was a lovely reception held by Dannie Chandler and Paul Fischer. They opened their display suite with hors d'oeuvres, sparkling cider (non-alcoholic champagne), and music complete with baby grand and pianist. The party was well received and well attended. It was such

fun, but I must admit, I felt a bit under dressed! Next time, the evening gown is a must! Thanks guys, for such a wonderful touch.



ICE CREAM SOCIAL

THURSDAY, JULY 31, 2003



Top: Ken Jinde takes a well deserved break from shooting pictures for the web page and enjoys a treat with his wife Louise. Below: John Titus visits with the Millers from Indiana. The Millers were only able to visit a short while this year and it was wonderful to see them!



The Howard Greenberg "Do-It-Yourself Auction" Friday, July 30, 2004



Hot ticket item at the Do-It-Yourself Auction was a piece of RSP which Howard Greenberg had tucked away in his jacket while parachuting into Normandy (see page 10), purchased by Joe and Wanda Faye Krick. Proceeds from the auction netted a whopping \$4065 for the club's treasury. Thanks, Howard and all of those who helped make the auction another great success!



Minutes From The Meetings



Board Meeting Thursday, July 29, 2004



President George Kandel, IN, called the meeting to order at 10:00 am. Officers present were Vice President Terry Coy, KY; Treasurer Linn Shultz, IA. Board members present were Marvin Kraus, NE; Assid Corban, New Zealand; Lee Marple, CA; Wanda Faye Krick, TM; Marlene Howard, OH. Also present were Web Master Ken Jinde, Canada; Newsletter Editor Linda Titus, IA; Fred Kunz, IL.

Recording Secretary Theresa Newcomer, PA, read the minutes of the last board meeting held on August 3, 2003. Terry Coy questioned if motion carried to collect tickets at banquet and breakfast. Yes it was carried and will collect tickets and will be announced at general meeting. Also questioned was a follow-up letter sent for non-renewals. Linn Shultz said they were sent. The minutes were then approved as read.

Linn Schultz, Treasurer, reported the financial report was put into the packets. Linn e-mailed a detailed copy to board members. As of June 2003 we had a balance of \$27,132.03. As of May 31, 2004 the balance was \$29,732.75. On July 26, 2004 the balance was \$20,158.78 with a 2 year CD for \$10,264.18 at 3 1/4% interests for a total of \$30,422.96. There

were more expenses than last year. Linn reported the books are ready for audit. He also filed the federal tax forms. The report was approved as read with a motion by Marvin Kraus and seconded by Assid Corban.

In the absence of Secretary Leslie Schultz, Linn Schultz gave the secretary's report. We had 18 new members over the past year, lost a total of 44, with 5 deceased. In 2002 we had 545 members, 2003 - 507 and pre-convention 475 with 2 new registrations at convention. Pre-registration was 153 households. There were 72 mugs ordered. There were 57 sold ahead of time. There were 132 banquet and 39 breakfast reservations. The secretary's report was approved as read by Marlene Howard and seconded by John Titus.

Terry Coy reported the raffle is slow as of our meeting. He spent around \$800 on two nice pieces. He has received several checks for people who could not attend the convention. Terry also reported that it might be difficult in the future to find good pieces for the raffle to make it interesting. Ideas were discussed on how to get pieces for future raffles, possibly donations from members. We need good lead piece for the first prize.

Old Business:

Seventy-two mugs were ordered, 60 have been sold at this point. A motion was made by Wanda Krick to continue the mugs for another year, seconded by Marvin Kraus.

Under discussion was how to get new and maybe younger collectors interested

in our organization. A motion was made by Linda Titus and seconded by Lee Marple to join the Association of Collectors Clubs for \$25 a year. This organization would make information available to newspapers, trade papers, or whatever media they have access to. We will try for one year. A liaison person is needed to give information to this group. Joe Krick volunteered to do this.

Ken Jinde reported the web page needs new and more information from members such as new pictures, articles, etc. Ken will bring this up at the business meeting.

Terry Coy has talked to other clubs about the benefits of newspaper advertising and they have had good results. A discussion followed about forming a general membership committee.

New Business:

The Nominating Committee, with Jane Stork as chairperson, reported that two directors, Marvin Kraus and Lee Marple have completed their second term. Wanda Krick has completed her first term and is eligible for re-election. There are openings for 3 directors.

Future convention sites are: 2005 Kansas City, MO, Embassy Suites, with Lois Walden and CL Riley splitting duties as chairpersons; 2006 Novi MI, Sheraton Hotel; 2007 Peoria, IL, Holiday Inn; 2008 Kentucky-Tennessee club has asked to host this one.

Due to some illnesses in the Indiana Club, Cole Reeves has taken charge and has done a very good job in this capacity.

Linda Titus reported that everyone is getting articles in to her for the newsletter. The article schedule for board members is working great and she would like to continue with this.

Ken Jinde reported the web site is still free. He has not had to pay for the server, but will probably have to in the future. He also needs articles and pictures for the website to be able to update and improve.

The animal zoo recipient this year will be the Julian House. This is a house for



Minutes From The Meetings



battered and abused women and children. They will be given to them on Saturday afternoon.

No problems were reported with room tables at this time.

In previous years we gave away three free rooms, in a drawing, to the members. We will be dropping this to two nights this year.

The club carts will be taken to the Heartland Club by Marvin Kraus for next year's convention. We currently have five carts.

The Auction Committee reported they did not have a difficult decision this year. Jim Wroda presented a very nice brochure. They might have a collection for next year's auction.

In the future we may not have Sunday Breakfast available for members. This will be discussed with members.

Terry Coy reported he was able to get two presenters for seminars this year. The third session will be an Open Forum for questions.

A motion to adjourn was made by Terry Coy and seconded by John Titus. Meeting adjourned at 11:40 a.m.

*Recording Secretary
Theresa Newcomer*

First Time and New Member Meeting Thursday, July 29, 2004

President George Kandel-IN welcomed all new and first time attendees to the 19th annual R.S. Prussia Collectors, Inc. Convention.

All officers and board members were introduced, including the newsletter editor and web master.

The convention schedule and room viewing was explained and stressed the importance of wearing the name tags at all times.

The President explained the flags and how they work as to being open or closed.

The Howard Greenberg Do-It-Yourself Auction was explained.

The seminars were announced and were explained, members often presented

the seminars. The third session on Saturday will be an open forum.

Everyone was invited to the ice cream social to follow this meeting.

Room visitation times will be announced at the business meeting on Saturday. Please ask permission to handle china in the individual rooms.

The members were informed of the Welcome meeting and the Business meeting.

Marvin Kraus invited all to Kansas City next year hosted by the Heartland Club. Meeting adjourned at 7:20 p.m.

*Recording Secretary,
Theresa Newcomer*



Welcome Meeting Friday, July 30, 2004

President George Kandel-IN called the welcome meeting to order at 9:00 a.m. The meeting was opened with prayer. He introduced all Officers, Board Members, Past President, Newsletter Editor, Web Master and Indiana club.

Terry Coy-KY, Vice President took a roll call of states and had members stand from their home states. He announced how many members we had from each state as the name was called. He then honored those members we lost, through death, since last year. They are Gale Strong, Reuben Schlegelmilch, Martha Davidson, Bill Williams, and Allen Mieritz. A moment of silence followed in honor of these individuals.

The host club was introduced, Cole and Jo Reeves, Indiana volunteered to take over hospitality room because of illness to the McCaslins and Lynnea Strong. Cole and Jo have done a very fine job.

Terry Coy also reported on the seminars to be presented. The presenters are Assid and Miriam Corban, New Zealand and Larry and Nadine Sidmore, IA. The third seminar will be an Open Forum.

The following committees were introduced: Auction Committee, Audit



George Kandel, IN
President



Terry Coy-KY,
Vice President



Cole Reeves, IN, Hospitality Host
McCaslins

Minutes From The Meetings



Committee and Nomination Committee.

The Nomination Committee asked to be contacted if anyone was interested in running for director. There are 3 positions open for director this year. There will be open nominations from the floor. They currently have three candidates for these positions.



Jane Stork, TX,
Nominating Chairperson



Linn Schultz, IA
Treasurer



Mary Lou Bougher, KY
Historian and "Flag Lady"



John Titus, IA
Board Member



Ken Jinde, Canada
Web Master

The importance of wearing the nametags was stressed. The green tags are for officers and board members, orange – host club; pink – new members; yellow – general membership.

Howard Greenberg-OH explained the do-it-yourself Auction and how it works and the fun had when presenting this auction. We have had 10 auctions and have raised over \$25,000 for the club. Last year \$3,080 was raised,

The importance of being sure to have your name tag on for the auction and the banquet is to help security to identify you as members.

Terry Stork recognized Howard and Selma Greenburg for the auction and for Howard's jump in Normandy. Howard had a Prussia dish in his pocket when jumping. He presented them with a video of the jump.

The meeting was adjourned at 9:45m.



Gwyn Kandel, IN
Wife of the President



Wanda Faye Krick, TN
Board Member



Recording Secretary,
Theresa Newcomer



Theresa Newcomer, PA
Recording Secretary



Selma and Howard Greenberg watch the news video which was presented to Howard by Terry and Jane Stork during the Welcome Meeting. Howard, 79, was among several Veterans to parachute into Normandy on June 7, 2004, to celebrate the 60th Anniversary of the Allied invasion of France. Below are photos of the actual video which shown to those present at the meeting. Thank you, Howard!



Minutes From The Meetings



Business Meeting Saturday, July 31, 2004

The Business Meeting of the 19th Annual Convention of the International Association of R.S. Prussia Collectors, Inc. was called to order by President George Kandel-IN at 9:00 a.m. Officers present were President George Kandel-IN, Vice President Terry Coy-KY, and Treasurer Linn Schultz-IA. Board members present were Assid Corban, New Zealand, Marlene Howard-OH, Marvin Kraus-NE, Lee Marple-CA, John Titus-IA, Wanda Faye Krick-TN. Also present were Newsletter Editor Linda Titus-IA, Webmaster Ken Jinde-Canada. The President thanked all officers and board members for a job well done.

Lisa Howell, of the Marriott Hotel, said that the staff has looked forward to us coming. She thanked us for our patience in the problems during registration. The hotel thanked Cole & Jo Reeves for stepping in and taking over the hospitality room.

Lisa presented Cole & Jo with a gift certificate from the hotel for a fine job.

Ken Jinde spoke on the website and asked for help with the site. He is open for any suggestions to improve the website.



Everyone who helped with the hospitality room was thanked for pitching in and helping

whether they were from Indiana or elsewhere. Cole Reeves, president of the Indiana

Club, thanked everyone for the baked goods that came from everywhere. Bob Gollmar from the Heartland Club thanked everyone and invited all to Kansas City, MO in 2005. We will be staying in an Embassy Suites which is near the airport. Breakfast is included in the room rate. The convention will be held the end of July.

The Nominating Committee for 2005 will be Chairperson Jane Stork-TX, Frank Huber-IL and Allen DiMarco-PA and Bob McCaslin-IN.

The Auction Committee for 2004 will be Chairperson Joeleen Passow-IA, Brad Witt-CO, and Marvin Heard-MN.

Joe Lemon of the Audit Committee said the Treasurers books have been audited and everything is in order. Joe Krick-TN made a motion to accept the Audit Committee report, seconded by Grady Hite-NC.

The minutes from the last business meeting were read by Recording Secretary Theresa Newcomer-PA. A motion to accept the minutes was made by Howard Greenburg-OH and seconded by Lee Scott-FL.

The board voted to create a membership committee. Anyone interested should see George Kandel. We are trying to get new and possibly younger collectors.

The treasurers report was as follows: June 1, 2003 - \$27,132.03; May 31, 2004 - \$29,732.75, an increase of \$2600.75 over previous year end balance. We also have a 2 year CD with a balance of \$10,264.18 at 3 1/4%. A question was asked about the large balance, Linn



Schultz and Joe Lemon explained why. Linn is asking that any bills be given to him before Sunday. A motion was made by Grady Hite to accept the report and was seconded by Robert Yaklin. The report was approved as read.

Linn Schultz gave the Secretary's report in the absence of Leslie Schultz. He stressed the importance of wearing the lanyards. The membership is down. We had 18 new members this past year. Our membership in 2002 was 545, 2003 - 507, 2004 - 475. The members were thanked for paying their dues promptly and on time. Pre-convention registration was 153, same as last year. Total number of people for the convention was 346,

down from 361 last year. All 72 mugs ordered have now been sold. A motion to accept the report was made by Mary Lou Bougher-KY and seconded by Mike Medvin-CA.

Jane Stork-TX, nominating committee chairperson, presented the nominees for the election. The four officers up for reelection were unopposed, and will remain in their positions. The floor was opened up for nominations



Jane Stork,
Nominating Chairperson

Minutes From The Meetings



for director. Since none were made a motion to close the nominations was made by CL Riley-KS and seconded by Allen Marcus-VA. The candidates are Wanda Faye Krick-TN up for reelection, Grady Hite-NC, Mike Medvin-CA, Richard Habernicht-IL, Dale Scott-FL and Georgina Stewart-NV.

Mike Baker and Jim Wroda reported on the auction. Jim thanked everyone for



their attendance and thanked Allen DiMarco and Harold Dodds for helping as runners. Mike also wanted to thank

everyone and presented a check for \$2,000 to the club. Jim Wroda personally donated \$500 to help with the membership committee with advertising, etc.

The new membership brochures were sent to all members, if more are needed let Linda Titus or Linn Schultz know and they will get some to you. It was stressed that we as members have to let others know about our club and what they get for their dues and give them a reason to join. Linda Titus is always looking for articles for the newsletters. She thanked any new contributors.

The Howard Greenburg Do-It-Yourself Auction was another success story. The auction made \$4,065 from the auction. Howard thanked everyone who helped to make this auction a success year after year.



Candidates for board positions: Dale Scott; Mike Medvin; Rick Habernicht; Grady Hite; Wanda Faye Krick; and Georgina Stewart.

Terry Coy reported that the seminars were well attended and thanked the presenters, Larry and Nadine Sidmore and Assid and Miriam Corban. Presenters are needed for 2005 in Kansas City.

Chairman for the 2005 convention in Kansas City are CL Riley and Lois Walden. Gale Bartell will be hospitality chairperson.

The election results are as follows: Directors – Wanda Krick-TN, Grady Hite-NC and Richard Habernicht-IL.

George Kandel stressed the importance of registering early for Kansas City. This will help to make check-in much easier.

The meeting was adjourned at 10:55 a.m.

*Recording Secretary
Theresa Newcomer*



Board Meeting Sunday, August 1, 2004

The meeting was called to order at 9:00 a.m.

The minutes from the Thursday board meeting were approved. It was decided to not read the minutes at the meetings because all minutes are in the October newsletter.

The Treasurer's report was presented by Linn Schultz. There were some expenses incurred by the hotel, but the hotel took care of those. We needed a total of 570 room nights, but hotel did not penalize if we had less. There were no questions on the report. The report was approved as read.

We were satisfied with the auction donation of \$2000. Discussion followed on the upcoming convention auctions.

The secretary's report was given by Linn Schultz. There were 153 pre-registrations. The total registration was 187. We had a total of 348 people for the convention. There were 72 mugs sold, 138 banquet tickets and 37 breakfast tickets. We had a total of 9 new memberships. Total membership is 475 households. It was voted to sell mugs again next year. The report was approved as given.

Cole Reeves sent dry supplies from the hospitality room with Marvin Kraus and the carts. Cole thanks everyone who helped.

The club raffle raised \$1,425 with expenses of \$850. The raffle went well and will be continued another year pending the ability to find good pieces.

Minutes From The Meetings

The seminars went very well and were well attended. Terry Coy reported he has two commitments for next year and will check for more. The open forum was very positive but was not what was expected. The seminars for next year will



be Lee Marple on scenic RS Germany and Joe Lemon with slides of the Schegelmilch factory before it was destroyed.

Under new business we discussed the possibility of having a barbeque buffet in place of the banquet. This will be decided by the Heartland club and George Kandel.

The auction committee reported that we may have a potential auction possibly two. The auction is a big draw and we should continue to have an auction at the convention. The auction is needed and is a big attraction possibly drawing some new members.

In the future there is always the possibility of not getting an auction; we will face that issue if and when it happens.

The auction was discussed at length. Anyone having any questions or thoughts should call or send them to George Kandel.

Linda Titus-IA will chair the membership committee. She will get a committee and develop a plan as to what will be done and how to do it. Advertising

needs to be done. A motion was made by Linn Schultz to print 1000 brochures, seconded by John Titus. Motion carried.

A motion was made by Linda Titus-IA to do away with the Sunday morning breakfast, seconded by Marlene

Howard-OH. Ken Jinde suggested that sellers on eBay put a link to our club website. Ken Jinde will put in the newsletter

how to do this link. Lee Marple will get in touch with Ken Jinde on improving the club website.

A discussion followed on changing the format of the convention; perhaps have the room viewing on a different day, changing the auction day. We will get feedback from the members about a possible change.

A motion was made by Linn Schultz to stop having the animal zoo, seconded by Wanda Krick. It is getting harder to find organizations or institutions to accept these animals. We discussed public relations for the club, (media, brochures,



etc.). We need news releases for local papers.

A motion was made to adjourn. The meeting adjourned at 9:40 a.m.

*Recording Secretary
Theresa Newcomer*

And the Winners Are....

Free Nights

The winners of the free night's lodging were Arlan Hetletvedt of MI and Eleanor & Walter Holz of NJ.

Raffle

Another great year for the raffle. Thanks to all of those who participated.

The winners were Carolyn Battle on TN and Jenny Lou Huston of TX.



2005 Committees Chosen

The 2005

AUCTION Committee:

Chairperson Joeleen Passow-Iowa
Brad C. Witt-Colorado
Marvin Heard-Minnesota

The 2005

NOMINATION Committee:

Chairperson Jane Stork - Texas
Frank A. Huber-Illinois
Allen DiMarco - Pennsylvania
Bob McCaslin - Indiana

Room-To-Room Viewing



The 2004 Shenanigan Report

Submitted by Annette Hite

What shenanigans occurred at the 2004 RSP Convention! I was a witness to the "goings on" and know you won't believe all I'm here to tell!

As many of us do, Grady and I bring items to sell in our hotel rooms, hoping to earn from our sales enough to buy some special RSP pieces at each convention (the convention usually coincides with our wedding anniversary, after all).

The couple entered our hotel room and in order to allow them to look at our RSP items for sale undisturbed, I greeted them and then looked back to the novel I was reading.

"Isn't she beautiful! Look at her beautiful slim waist and also those lovely, lovely hands", he said.

Oh my goodness! Oh dear! But then again I hadn't seen my waist in years and my hands were old, spotted and had been "aged" since my fortieth birthday! I quickly realized my visitors were admiring our hidden image dresser tray whose mold "hides" not only a ladies head but the shape of most of her body as well. They picked her up; they touched her hair; they admired her color and the flowers she held. They left murmuring of HER beauty! Shenanigans!

As he slithered by my hotel door I decided to follow this suspicious but well dressed man (RSP name tag in place) to determine why he might be

slithering. He stopped at the next doorway. Nonchalantly I passed on by, made a soon u-turn and headed back towards my room. He stood near my neighbor's open doorway, staring (I mean staring!) at her Prussia, some items were for sale, others for display only. He made no attempt to enter the room although it was obvious that two or perhaps three Prussia aficionados were conversing happily. Why didn't he at least act sociable with a wave or a greeting? But what was happening? Was he salivating? What was he muttering? I waited 'til he slithered on down the hall. Same scene, same person, same happenings at least twice more in a two hour period. I even "dropped in" next door for a few minutes to socialize and to see what he saw. Pretty Prussia plates and bowls were for sale and among the "For Display Only" pieces was a rare animal tankard. Was that the visitor's fascination?

Fortunately, throughout most of the next day my neighbor must have been socializing elsewhere because her door remained closed. He came again. He now did not slither but paced anxiously up and down the hall exclaiming softly but distinctly, "Dirty words! Dirty words! For Display Only are dirty words! Should be for sale!"

Such shenanigans! And now that the convention is over, one wonders, is he still mumbling

"Dirty words! Dirty words!"?

While waiting in the queue to view and inspect items going up for auction I stood immediately behind a very tall man over whom I could not see over or around. But he was exclaiming, "She feels so satiny and oh so smooth"! His voice then lost its dreamy sound and became harsh! "Oh, no! Now that area is so 'grainy'!" Well, I knew immediately that this was no complimentary adjective! Now what was I going to witness? He slowly lifted a large Prussia bowl over his head, positioning it close to an adjacent light. He and I both could see as the light penetrated the bowl that major repair had been done. I realized too that my first impression that he was speaking to a person was erroneous. And I thought I was to witness (or at least hear some shenanigans!)

I bet you thought I'd reveal some unsavory shenanigans, didn't you? Never! It is always so obvious to me that we convention-goers love our Prussia and each other! Let's keep it that way!

Room-To-Room Viewing



From the Auction Committee

Submitted by Joeleen Passow

Convention 2004 is a treasured memory. I wish to once again thank the members of the auction committee. I really appreciate your support, Marvin and Brad.

My thanks also to Jim Wroda for submitting and conducting this years convention auction. I know it takes a lot of time and effort to make a presentation to the committee.

During the convention, I had several members inquire about the duties of the auction committee. I'll try and give a short explanation here.

1. The three committee members are appointed by the IARSPC President for the duration of his two year term.
2. The committee is open to the presentation of an RSP collection suitable for convention by any auctioneer.
3. The Committee has NO SAY in whose merchandise or which pieces are presented. That is strictly up to the auction house. It is limited to approximately 250 pieces and any large amount over that must be approved by the IARSPC board.

4. It could be one collection or several. We can only hope it is a well rounded offering.
5. A copy of each auction presentation must be placed in the hands of each committee member.
6. In the case of two or more presentations, each of the committee members review all of the submissions using a previously approved grading system. The results are compared and an auction selected.
7. Once the auctioneer has been notified his auction has been selected for convention, it is his baby!!
8. The auction committee is finished until the following year.

I hope this clears up some of the questions concerning the duties of the auction committee.

In the mean time, we're open for business concerning the convention of 2005. Please contact Brad Witt, Marvin Heard, or myself, Joeleen Passow, with any information or questions.

Membership Recruitment

One of the most discussed issues at this year's convention was generating new club membership. To achieve this goal, the Board of Directors is pursuing several strategies, one of which is joining (for a mere \$25) the Association of Collecting Clubs (ACC). The ACC maintains a website <http://collectors.org> from which a browser can find links to collecting clubs in a general area of interest, i.e. porcelain. There is also an ACC News Service that posts articles about a club online and distributes them to newspapers and radio shows for pick up. In addition, the ACC will have a booth at the Atlantic City Antique Show October 16-17 and will make RSP promotional leaflets available to the public at no charge. The RSP Board has asked Joe Krick to be the liaison to the ACC News Service. If you have items of interest or information about upcoming meetings of regional Prussia clubs, please forward this to joekrick@charter.net for posting. Hopefully, this will generate interest and increased participation at both the local and national level.



Save some ice cream for us! M-m-m-m-m-m!



Assid Corban, New Zealand is ably assisted by Ken Jinde, Canada, while they attempt to get the slide projector up and running again.

Room-To-Room Viewing



Hospitality Room



I would like to thank the Indiana Club for all of the goodies they supplied to the hospitality room and for all of their help. Also thank you to the many people that brought goodies from out of state. We also received a great deal of help from out of state people. In particular, I would like to thank a man, henceforth to be known as Sir Robert Gollmar for his tireless effort in the hospitality room. He was knighted (I have that authority here in Indiana) with a serving spoon. He said he didn't want me anywhere near his head with a sword. The stuffed toys were presented to the Julian Center, which is largest refuge for abused women and children in Indianapolis. They were very appreciative. The toys will provide a friend for those that feel they have none. Thank you for all coming, I hope everyone had a great time.

Cole Reeves

Elaine's Zucchini Bars

4 eggs	½ t. Salt
1½ C. Oil	2 t. baking powder
3 C. sugar	1 t. soda
3 C. Flour	1 ½ t. cinnamon
3 C. grated zucchini	1 C. coconut
1 ½ C. nuts	

Mix first 3 ingredients together and then add the rest. Pour batter into a greased cookie sheet and 6 or 7 cupcakes. Bake at 350° for 20-25 minutes. Cool and Frost with cream cheese frosting.

DELICIOUS!

Frosting: for Zucchini Bars

1 ¾ stick margarine
2 8oz. cream cheese
2 lbs. powdered sugar
2 T. vanilla

Beat margarine, cream cheese, and vanilla together until smooth and then add the powdered sugar.

Room-To-Room Viewing



2004 Convention Programs

A special thanks to Assid & Miriam Corbin (Miniature Vases), and Nadine Sidmore (Restoration and Repair) for the seminars they conducted for this year's convention. Their preparation and work was greatly appreciated by all in attendance.



Terry Coy



2005 Convention Seminars

Should any member like to volunteer to do a seminar in 2005 at the Convention in Kansas City, send me the topic of that seminar.

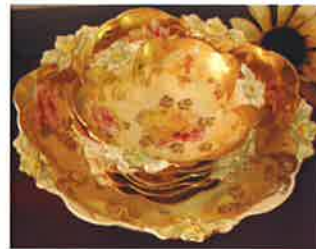
Also, I will take suggestions for the topics of the seminars. Please send your replies to Terry Coy in writing. My address is 212 Wooded Falls Rd., Louisville, KY 40243.

Thanks,
Terry Coy

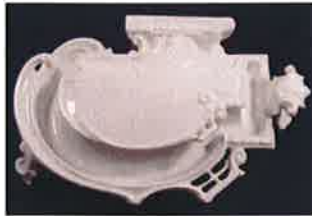
***Please Note
Change of Address:***

Mr. and Mrs. Joe Franzmathes
P.O. Box 59
Martin, GA 30557

Room-To-Room Viewing



Room-To-Room Viewing



Banquet

Saturday, July 31



Larry Bazaar seems to be a bit under dressed for the banquet, especially next to Dr. James and Janet Shetlar! Imagine Larry's surprise when he opened his suitcase on banquet night to find he forgot to pack his dress pants! It takes courage to show up with casual shorts and a jacket. Way to go Larry!



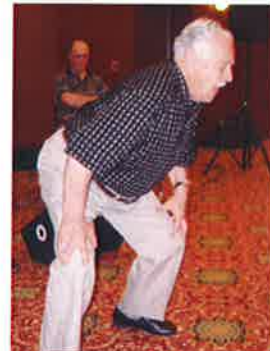
Banquet

Saturday,
July 31



Dorothy Parker of New Jersey (*alias The Cobalt Lady*) hand sews her Victorian attire each year for convention to wear at the banquet. This year she sewed a charming cobalt outfit.

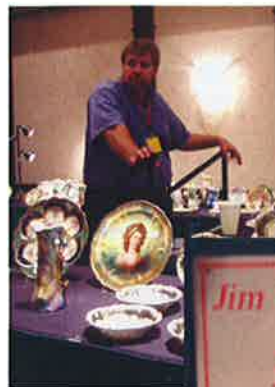
Entertainment, Raffle, Installation of Officers. . .



2004 Convention Auction • Friday, July 30, 2004

Hosted By Jim Wroda Auction Service

The 2004 Convention Auction was brought to the club by Jim Wroda Auction Service. Jim and his able crew sold xxx lots to the large crowd of eager R.S. Prussia enthusiasts. Below is a list of the items and their selling prices.



- 115 A. RSP 8 1/2" Point & Clover cobalt & green plate w/Roses & Snowball décor. Small nick on edge.
- 260 B. Um RSP 8 1/2" Countess Potocka portrait plate.
- 950* C. Um RSP 7" Iris handled ewer w/Lady with Fan décor. Very Rare!
Small hard to find touch up on base.
- 525 D. RS Germany small white figurine. Scarce
- 125 1. RSP Floral chocolate pot w/ draped base. Mold ?
- 150 2. Um RSP Folded Poppy mold floral cracker jar
- 175 3. Hidden Image 12" Floral cake plate. NICE!
- 125 4. RS Germany pedestal chocolate pot w/ Reflecting Flowers décor.
- 30 5. ES Germany 6" floral handled nappy
- 175 6. Um RSP fl'd floral chocolate pot.
- 95 7. RSP floral cream & sugar set
- 825 8. RSP Medallion mold chocolate pot.
Floral w/tapestry medallion's & Lebrun w/hat.
- of Potocka
SUPER!
105 9. RS Germany 6" plate w/Parakeet & silver overlay
- 900 9A. RSG Steeple mark Rosebud mold 11 pc. Berry set w/heavy Tiffany and gold trim. Floral. Outstanding set!
- 450* 9B. RSP 9" Iris mold satin finish Cottage Scene plate. Very tiny nick on edge. Beautiful plate.
- 150 9C. RSP 10 1/2" Point & Clover mold satin finish floral bowl.
- 160* 9D. RSP 7" Cottage Scene vase, tiny paint flick on back. Not damage.
- 1600 10. RSP 11" CARNATION MOLD SEASON SATIN BOWL. SUPER NICE CONDITION! RARE!
- 4000 11. RSP 10 1/2" VIOLET MOLD SPRING SEASON BOWL W/COBALT TRIM. NICE TURQUOISE AND GOLD. RARE!
- 1600 12. RSP 10 1/2" Iris mold Summer Season w/roses satin bowl. Very scarce and nice!
- 400 13. Um RSP Demitasse pot w/ colonial scene. Scarce
- 2@ 255 14. Um 2 RSP 5" Castle and Mill scene round vases. Selling choice.
- 350 15. RSP 9" Medallion mold relish w/ Indian runner duck décor. Nice
- 150 16. Um RSP 5" Medallion mold 3 ft'd bowl w Swan and bluebird décor.
- 1400 17. RSP 10 1/2" Four Seasons Bowl with alternating floral domes. RARE!
- 2500 18. RSP 12" ICICLE MOLD BARNYARD TANKARD. VERY HARD TO FIND! NICE!
- 2000 19. RSP 11" Dice Throwers scenic vase. Has opal jewels & reticulated base. Nice!
- 1625 20. RSP 13" CELERY W/ 6 SCENE BARNYARD DÉCOR. MINT GREEN LUSTER FINISH & GOLD. SUPER RARE!
- 700 21. RSP 10" Swag & Tassel mold Barnyard & swallows cake plate. Nice!
- 95 22. Um RSP 7" Chestnut mold plate w/Swans décor.
- 950 23. Um RSP 6" Hummingbirds vase. Rare.
- 650 24. RVG 12" Madame Recamier 2 handled vase. Great color!
- 850 25. Hidden Image 9" Cobalt trimmed bowl. Very scarce size for this. Nice
- 5000 26. RVG 12 1/2" COBALT VASE W/PEASANT GIRL DÉCOR. SUPER RARE & EVEN MORE IMPRESSIVE!
- 275 27. RSP 10 1/2" Floral bowl w/Roses décor. Nice blown out edge
- 1000 28. RSP FLEUR-DE-LIS MOLD CRACKER JAR W/SUMMER SEASON DÉCOR. VERY SCARCE
- 1450 29. RS GERMANY 10" DANCING GIRLS WALL PLAQUE. VERY RARE & PRETTY!
- 1800 30. RSP 9" FOUR SEASONS VIOLET MOLD PLATE. VERY CLEAN PLATE!
Hidden Image handled 11" bowl w/nice tiffany border. RARE
- 1200 31. RSP 11" Point & Clover mold satin floral cake plate w/scattered flowers.
- 150 32. Um RSP 10 1/2" bowl w/gold border and 3 medallions of Lady Watering Flowers-w/Fan & Feeding Chickens décor. Nice.
- 500 33. Um RSP 10 1/2" bowl w/gold border and 3 medallions of Lady Watering Flowers-w/Fan & Feeding Chickens décor. Nice.
- 550 34. Um RSP 7pc. Lily mold berry set w/gold domes and floral décor. nice
- 2@ 2200 35. PAIR RSP MATCHING MELON EATERS LIDDED URNS. LOT'S OF OPAL JEWELS. VERY RARE SET 2 X MONEY
- 400 36. RSP 12" oval bowl w/ Man in Path décor. Nice.
- 625 37. Um RSP 13" Stipple mold floral tankard w/gold.
- 150 38. Um RSP 12" floral oval bowl w/ gold domes and gold stenciling. NICE!
- 425 39. Um RSP 10" Lily mold cake plate. Solid gold w/floral décor. NICE!
- 165 40. RSP 10 1/2" Satin finish floral cake plate w/ snowball & roses décor.
- 60 41. RSP 8" satin finish Swans décor plate
- 80 42. RSP 8" satin finish cartoon Swan décor plate
- 120 43. RSP satin finish Swan décor syrup pitcher.

- 850 44. RSP 3 scene Barnyard satin finish cracker jar. Super nice and pretty rare!
- 175 45. RSP 4" Mill Scene bottle vase.
- 250 46. RS Suhl 4" Cage scene bottle vase w/ handles
- 195 47. RSP 5" stemmed candy dish w/ Swallows décor. Scarce.
- 140 48. Um RSP Morning glory mold floral teapot.
- 170 49. Um RSP 10 1/2" Lily mold cake plate w/ gold flowering. Nice
- 450 50. ES Germany 12" vase w/ Lady & Doves décor.
- 80 51. Um OS Germany 10 1/2" bowl w/Classical scene.
- 80 52. RSP 5" Carnation mold footed floral bowl.
- 2@ 2000 53. 2 UM RSP 9" LIONS VASES. SUPER NICE!! SELLING CHOICE
- 1300 53A. UM RSP 10 1/2" SATIN FINISH MAN IN MOUNTAIN BOWL W/BUEBIRD BORDER. EXTREMELY RARE!!!
- 4200 53B. RSP 15" CARNATION MOLD SATIN FINISH FLORAL BOWL. ONE OF THE BEST 15" BOWLS OUT THERE!!!
- 800 53C. RVG 15" COTTAGE SCENE EWER. EXTREMELY RARE SHAPE & SIZE. OUTSTANDING!!!
- 1200 54. RSP 8" Spring Season keyhole plate w/ mint green and gold border. Very Clean!
- 3200 55. RSP 10 1/2" BOWL. COBALT AND TAPESTRY GOLD W/ MEDALLIONS OF THE LEBRUN GIRLS. SUPER ELEGANT GOLD WORK ON AN EXCEEDINGLY RARE BOWL. ONLY ONE I HAVE EVER SEEN FOR SALE!
- 2400 56. RVG 11" 2 handled vase, cobalt and yellow w/Potocka portrait. Very nice!
- 2500 57. RSP 5" ADMIRAL PERRY PLATE. MIDST SNOW AND ICE. VERY RARE!
- 1400 58. RVG 9" tiffany 3 handled vase w/Lebrun no Hat décor. Super Clean!!
- 275 59. UM RSP CARNATION MOLD COBALT RELISH DISH W/GOLD OUTLINING. OUTSTANDING!
- 2100 60. UM RSP 10 1/2" CARNATION MOLD COBALT CAKE PLATE W/GOLD OUTLINING. OUTSTANDING ALSO!
- 1700* 61. UM RSP CARNATION MOLD COBALT TEA POT W/GOLD OUTLINING. SUPER RARE! TINY TOUCH UP ON FINIAL. NO BIG DEAL!
- 775 61A. Um RSP 4" cobalt vase w/floral décor. RVG mold 1.

- 1800 61B.UM RSP DEMITASSE SET W/4 CUPS & SAUCERS, FLORAL W/HEAVY TIFFANY TRIM. EXTREMELY MINT. MOLD 339. RARE!
- 1600* 61C.UM RSP FLORAL DEMITASSE SET W/6 CUPS & SAUCERS, RED W/ YELLOW ROSE DÉCOR. RARE!! TINY NICK INSIDE CUP.
- 2/@ 3501 @ 85-pheasnts 62. (3) R.S. Tillowitz 8" plates w/Exotic Birds décor. Selling choice.
- 800 63. RSP 10" satin finish Fleur-de-lis Spring Season cake plate. Very Scarce
- 900 63A RSP 10 1/2" satin finish Fleur-de-lis Summer Season cake plate. Very Scarce.
- 400 64. RSP 10 1/2" Swag and Tassel mold 3-scene Barnyard cake plate. Scarce!
- 700 65. RSP 10 1/2" Swag and Tassel mold 3-scene Barnyard bowl. Scarce!
- 450 66. RSP 10" Medallion mold Man in the Mountain cake plate. Scarce.
- 1900 67. RSP 8 1/2" Summer Season Keyhole plate. tiffany and gold border. Super clean.
- 2/@ 250 68. (2) Um RSP mold 343 11 1/2" cake plates, cobalt and gold trim w/medallions of Angelica scenes. Selling choice. Both very nice!!!
- 700 69. RSP 9" STAG SCENE BOWL, MOLD 260. VERY SCARCE.
- 450 70. RSP 10 1/2" floral bowl w/lavender, maroon, and tiffany domes. Super!
- 175 71. Um RSP 10 1/2" Iris Variation mold floral bowl w/gold border.
- 225 72. Um RSP 10" Iris Variation floral bowl w/aqua and maroon border.
- 1100 73. RSP ICICLE MOLD SATIN FINISH AND GOLD CHOCOLATE POT W/ LAYING BASKET OF FLOWERS DÉCOR. ONE OF THE BEST CHOCOLATE POTS OUT THERE. OUTSTANDING!
- FLORAL**
- 250 74. RSP 10 1/2" Bowl in Bowl w/Fruit décor. Nice!
- 165 75. Germany Saxe Altenberg 10 1/2" folded Poppy mold cobalt & floral cake plate.
- 350 76. RSP 11" Swan & Gazebo cake plate. Nice!
- 375 77. RSP 10 1/2" Point & Clover mold cake plate w/cobalt and gold domes w/ Snowball & Roses décor. Super.
- 175 78. RSG Steeple 10 1/2" floral bowl, gold domes and stenciling. Nice!
- 550 79. Um RSP 10 1/2" Hexagon bowl w/Lady Feeding Chickens and tiffany domes. Nice!
- 575 80. RSP Point & Clover mold chocolate pot w/cobalt domes and Snowball & décor. Lid repair.
- Roses 81. RSP 5" DOUBLE HANDLE GAZELLE VASE. VERY RARE!
- 1300 82. HIDDEN IMAGE HANDLED BOWL COBALT AND GOLD W/FLORAL DÉCOR. RARE!
- 1000 83. RSP THREE SCENE CHOCOLATE POT W/SWANS, TURKEYS, AND BIRDS DÉCOR. SUPER LOOKIN' POT!!! TINY HAIRLINE ON
- 850* 84. UM RSP 13 1/2" STIPPLED TANKARD W/SUMMER SEASON AND MILL SCENE DÉCOR. EXTREMELY RARE AND FINE TANKARD
- BLUE 85. UM RSP GIANT POPPY MOLD SOLID COBALT CHOCOLATE POT. SMALL FINIAL TOUCH UP. BOUGHT AT THE ROSE ELLEN BEYER AUCTION. SUPER!
- SPOUT. 2700
- 525*
- 150 86. E.S. Germany 13 1/2" Lady Smelling Roses celery.
- 750 87. UM RSP 6" TIGERS BOTTLE VASE. VERY RARE!
- 850 88. RSP ball footed Tiffany creamer/sugar set w/ Summer Season décor. Nice.
- 350 89. RSP 9" 2 handle vase w/ Swans and Evergreen décor.
- 450 90. RSP Swan & Evergreens décor chocolate pot. Nice.
- 1300 91. RSP satin finish Carnation mold chocolate set w/4 cups & saucers. Nice set!
- 325 92. RSP 12" Carnation mold bowl. Floral w/Roses décor.
- 250 93. RSP hair receiver and covered box w/ Swans décor. NICE SET!
- 145 94. RSP Point & Clover mustard pot. Snowball & Roses décor.
- 900 95. RSP 10 1/2" Iris mold Winter Season satin bowl. Nice coloring.
- 450 96. RSP 10" Castle scene bowl. Nice mold. Scarce
- 1900 97. RSP 10 1/2" BOWL W/SUMMER SEASON AND MILL SCENE DÉCOR. HAS ROSES BORDER IN NICE COLORATION. RARE!
- 2/@ 950 98. RSP 10 1/2" POINT & CLOVER MOLD DICE THROWERS BOWL & MELON EATERS BOWL. BOTH NICE. SELLING CHOICE!
- 400 99. RSP Ribbon & Jewel mold 8" Castle scene vase.
- 625 100. RVG Blown out floral vase. Tiffany and gold. Beautiful!
- 10,000 100A.RSP SOLID COBALT W/GOLD WATER LILIES DEMITASSE SET W/6 CUPS & SAUCERS.
- 700 100B.RSP 9 1/2" SOLID COBALT W/GOLD WATER LILIES BOWL.
- 2200 100C.RSP SOLID COBALT W/GOLD WATER LILIES CRACKER JAR. MOLD 584.
- 250 100D.RSP 6" SOLID COBALT W/GOLD WATER LILIES 3-FOOTED BOWL. MOLD 584.
- 1800 100E.UM RSP SOLID COBALT W/GOLD WATER LILIES CHOCOLATE POT. MOLD 584.
- 1100 101. RSP 4" TIGERS ROUND VASE. RARE!
- 475 102. RSP 10 1/2" Masted Schooner bowl. Nice.
- 225 103. Hidden Image 10 1/2" Floral bowl w/ green hair.
- 2300 104. RSP 10 1/2" FLEUR-DE-LIS FALL SEASON BOWL W/LOT'S OF GOLD & TIFFANY DOMES. KILLER BOWL!
- 1000 105. Um RSP 11" Blown floral bowl w/ Colonial scene. Great mold!!! NICE
- 2/@ 175 106. Pair bottle vases w/Diana Huntress and Reclining Flora décor. Selling 2 x money
- 250 107. RSP 2 1/2" Mill scene round vase. Cute
- 700 108. RSP Icicle mold cracker jar w/ Man in Mountain and Shepherder décor. NICE!
- 600 109. ES GERMANY 7" TIFFANY EWER W/ LADY AND DOVES DÉCOR ON 4 SIDES. SUPER!!
- 175 110. RVG 7" tiffany vase w/Reclining Flora décor
- 295 111. RSP 7" satin finish Swans bottle vase. NICE!
- 225 112. RVG 6" tiffany Vase w/Reclining Flora décor.
- 700 113. RSP 7" 2 handled Melon Eaters pillow vase. NICE!
- 850 114. RSP flower form satin teapot w/sponge effect. Super
- 425 115. Um RSP Chestnut mold cracker jar w/Swans décor
- 425 116. RSP 4-Scallop mold chocolate pot w/Swans décor. Nice
- 325 117. RSP Point & Clover mold cider pitcher w/Roses décor and nice gold.



- 325 118. RSP ball footed floral cracker jar. Pretty
185 119. RSP 6" Swans covered box.
275 120. RSP Steeple 5" cobalt & gold floral ball vase
120 121. RSP satin finish Swans syrup pitcher. Nice
285 122. RSP 4" ball vase w/ Turkey décor. Nice
150 123. RSP floral pedestal cream & sugar set w/ nice coloration and gold.
2800 124. RSP IRIS MOLD SATIN OVAL BOWL W/SPRING SEASON DÉCOR. VERY RARE AND MINT!
- 155 125. RSP Fleur-de-lis mold oval floral bowl.
475 126. RSP 11" Icicle mold Swans bowl. Gold outlining
450 127. Um RSP 10" Sawtooth mold all gold bowl w/roses décor/ WOW!
425 128. RSP 10 1/2" Swans swimming in channel of evergreens décor bowl. Nice
400 129. RSP 13" Point & Clover mold Dice Throwers bowl. Scarce
475 130. Um RSP 10" square bowl cobalt w/Jonquils décor
300 131. RSP 7 pc floral berry set w/Roses decor. Nice!
200 132. RSP 5pc Violet mold Floral berry set w/Poppy décor. Nice color!
625 133. Um RSP 13" mold 343 celery dish. Cobalt trim w/ Lady Feeding chickens décor. Nice
300 134. Um RSP 13" Sawtooth mold celery dish w/ Mill Scene décor.
160 135. Um RSP 10" square bowl w/ cobalt border and center and medallions of Diana & Flora. Nice
- 750 136. Hidden Image handled 11" bowl w/painted hair. Floral. Nice
1400 137. Um RSP 11 1/2" mold 343 cobalt trimmed cake plate w/ Lady & Fan décor. Nice
1300 138. RSP 8 1/2" SPRING SEASON KEY HOLE PLATE W/GOLD & TIFFANY TRIM. SUPER!
- 300 139. RSP 8 1/2" Icicle mold 2 scene Barnyard plate. Scarce
325 140. RSP 8 1/2" Medallion mold Pheasant & Evergreen plate
950 141. RSP 8 1/2" HONEYCOMB MOLD SNOWBIRDS PLATE. VERY NICE!!
375 142. RSP 10 1/2" 2 scene cake plate w/ Sheepherder and Swallows décor. Satin. Nice
750 143. RSP 8 1/2" tiffany & gold Winter Season vase.
255 144. Hidden Image floral hair receiver. Scarce
875 145. RSP 9 1/2" Melon Eaters vase w/ opal jewels and handles near the bottom. Very nice vase!!
- 250 146. RSP 10 1/2" bowl w/ Swans Swimming in Channel décor. Nice!
185 147. Um RSP 10" mold 343 cake plate w/Reclining Flora décor in center & Cherub medallions.
200 148. Um RSP 11" mold 343 charger w/Reclining Flora décor in center & Cherub medallions.
- 1250 148A RSP MEDALLION MOLD COBALT & FLORAL 3-PC. TEA SET. EXTRA CLEAN & RARE!
950 148B UM RSP MEDALLION MOLD COBALT & FLORAL CIDER PITCHER. FANTASTIC MATCH TO TEA SET ABOVE!!
2500 148C. RSP CARNATION MOLD COBALT CRACKER JAR W/HEAVY GOLD OUTLINING. SUPER RARE!
- 2000 149. RSP 10 1/2" IRIS MOLD COBALT & FLORAL CAKE PLATE. SUPER NICE & RARE!
375 150. RSP 9" cobalt medallion mold relish w/Colonial Boy & Girl medallions. Very scarce
- 1300 151. RSP 10 1/2" cobalt Plume mold bowl w/ Reflecting Flowers décor. WOW!
4200 152. RSP COBALT MEDALLION MOLD PORTRAIT CRACKER JAR W/ PORTRAITS OF LEBRUN & RACAMIER IN GOLD TAPESTRY MEDALLIONS. SUPER RARE & AWESOME!!
- 1700 153. Um RSP Lily mold cobalt 5pc berry set w/gold outlined Iris's. SUPER!!
3700 154. RSP 12" CARNATION MOLD COBALT BLUE BOWL W/GOLD OUTLINING & TRACERY. VERY IMPRESSIVE BOWL!
- 1700-P825-L 154A (2) UM RSP TIFFANY & GOLD 8 1/2" VASES (1 W/POTOCKA, 1 W/LEBRUN W/HAT) BOTH ARE SUPER. SELLING CHOICE!
- 300 155. ES Germany 13" Lady Smelling Roses plaque.
80 156. Um RSP 6" Heart Shaped box w/ Clematis décor.
675 157. RVG 7" 2 HANDED TIFFANY VASE W/LADY AND FAN DÉCOR. SUPER CONDITION!!
- 400 158. RVG 6 1/2" 2 handled tiffany w/Lady Feeding Chickens décor. Nice
650* 159. Um RSP Sawtooth mold solid gold demitasse pot w/Roses décor. Lid has some damage.
- 1200 160. RSP 12" satin Iris mold Celery w/ Fall Season décor. Scarce
275 161. RSP 11" lidded floral urn. Very nice!!!
425 162. RS Poland 2 1/2" vase w/Turkey décor. Nice
175* 163. ES Germany 5" portrait vase. Hairline on back
325 164. Um RSP Bow Tie mold mustard pot. Nice
2@ 35 165. 2 floral toothpicks. Selling choice
166 166. Um RSP 4" Man in Path vase.
15 167. RSG 6" handled nappy w/carnation décor.
175 168. Um RSP 4" Castle scene ewer.
85 169. RSP floral syrup pitcher w/o under plate
350 170. Early years Inkwell w/quill holder. NICE
50 171. Early years floral mustard pot
55 172. Um RSP Sawtooth mold syrup w/o under plate
2700 173. RVG 12" 2 handled vase w/ Clematis décor. KILLER COLOR!!!!
175 174. Um RSP 11" Oak Leaf mold floral cake plate.
145 175. RSP 12" Swag & Tassel mold celery w/swans.
275 176. Um RSP 10 1/2" mold 343 cake plate w/ Diana Huntress décor. Very nice!
50 177. RSP 10 1/2" floral cake plate w/Roses.
65 178. Early years HP floral dresser tray.
300 179. RSP 10 1/2" satin floral bowl w/ grapes border. Gold and tiffany trim SUPER!
225 180. RSG Steeple Iris Var. 10 1/2" bowl w/Scattered Poppy décor. Great color.
375 181. RVG 7" lidded urn w/ double portraits. RARE!!
1900 182. RSP 13" STIPPLE MOLD COBALT TANKARD W/GOLD TRACED CARNATION DÉCOR. A TRUE BEAUTY!!!
700 183. Um RSP 10 1/2" Cobalt bowl w/Greek key and floral décor.



- 600 184. RSP 10 1/2" Masted Schooner bowl w/ gold trim. Nice.
350 185. RSP 10 1/2" bowl w/ Fruit décor. Satin finish w/ gold highlights. SUPER NICE!!
- 225 186. RSP 10" bowl w/Swans décor.
650 187. RSP 10 1/2" BOWL W/ SWANS IN CHANNEL DÉCOR. NICE SOFT PASTEL COLORS. REALLY NICE!
- 625 188. RSP Tureen mold satin floral biscuit jar. Nice
600 189. RVG blown out floral satin finish 8" floral vase. WOW... What mold work!
300 190. Um RSP floral chocolate pot w/formed spout.
400 191. RSP Icicle mold floral chocolate pot w/ nice hot pink colors.
75 192. Um RSP 8" Sawtooth mold plate w/Clematis décor
35 193. ES Germany floral biscuit jar.
500 194. Um RSP Sawtooth mold cracker jar w/ Roses décor and nice red colors.
225 195. RVG 7" 2 handled tiffany vase w/ Reclining Flora and Diana portraits w/ cherubs. Nice
- 425 196. RSP 9" 2 handled Shepherd vase. Scarce!
75 197. RSG 4" Lady Feeding Chickens salt. Cute item
2@ 65 198. Pair RSG 8 1/2" scenic plates. (1 Has Woman in Path and 1 has Oxen in path w/Birch trees.) 2x money. Both nice!
- 95 199. RSP 9" floral relish w/Roses décor & opals.
115 200. RSP 11"x7" Point & Clover mold dresser tray w/Roses & Snowballs décor.
950* 200A. Um RSP cobalt chocolate pot w/draped Poppy flowers. Mold 213. Very rare chocolate pot. Has finial touch up.
185 200B. Um RSP 8 1/2" Rosebud mold plate, cobalt w/gold traced flowers. Mint!!!
200 200C. Um RSP 8 1/2" Sawtooth mold plate, cobalt w/gold traced flowers. Mint!!!
285 201. RSP 10" Icicle mold cake plate w/tapestry effect and Reflecting Flowers décor.
975 201A. Um RSP Swans scenic child's set in original box w/lid. Outstanding condition! Rare chance here!
- 1000 202. Double Hidden Image cobalt & gold trimmed 10" floral bowl. Super bowl!
70 203. German classical scene oil lamp.
575 204. RVG 6" Flossie 2 handled vase. Nice!
325 205. Um RSP 11" Fold Over bowl, cobalt trim w/Lilac décor. Very Nice!
350 206. R.S. Suhl 7" cobalt Dice Throwers bottle vase.
500 207. RVG 9" 2 handled vase, Lady Feeding Chickens and Mums décor. Nice coloring.
- 325 208. Um RSP 11" cobalt fold over bowl w/white hand painted flowering.
125 209. RSP satin finish mustard pot. Laying Basket of Flowers with Tapestry effect. Very Nice.
- 350 210. Um RSP Lily mold demi cup/saucer w/gold medallion of Madam Racamier.
90 211. RSG owl night light.
200 212. RVG 8" cobalt vase w/Diana and Flora portraits.
150 213. E.S. Germany type large clock w/Cherubs. Very Nice.
500 213A. RSP 10 1/2" floral bowl w/long stemmed roses, tiffany & gold border w/opal jewels. Mold 404. Absolutely beautiful!!!
- 900 213B. RSP 11" BOWL, SOLID GOLD TAPESTRY W/OPAL JEWELS & ROSES. MOLD 404.
400 213C. RSP 10" CAKE PLATE, SOLID GOLD TAPESTRY W/OPAL JEWELS & ROSES. MOLD 404.
- 45 214. E.S. Germany 5" Classical Scene vase.
225 215. RSP Point & Clover mold chocolate pot w/Rose décor.
2@ 300 216. (2) RSP RIBBON & JEWEL 5" PLATES W/LEBRUN AND RECAMIR PORTRAITS-GOLD TAPESTRY AND OPAL JEWELS. BEAUTIFUL PLATES SELLING CHOICE.
- 375 217. RSP 9 1/2" RIBBON & JEWEL POTOCKA PORTRAIT RELISH-GOLD TAPESTRY AND OPAL JEWELS.
200 218. RSP 10 1/2" Iris mold satin finish floral bowl.
175 219. Um RSP 10 1/2" floral bowl w/gold domes.
150 220. RSP 10 1/2" Ripple mold cake plate w/Scattered Flowers décor.
40 221. Early Years hand painted floral mustache cup/saucer.
600* 222. Um RSP Tureen mold chocolate set w/6 cup & saucers, floral. One cup has crack.
- 100 223. Um ES Germany 10" portrait bowl.
575 223A. RSP 12" Carnation mold satin finish floral bowl. Very nice!
1400 224. UM RSP 8 1/2" TIGERS VASE - GREAT SIZE FOR THIS VASE. RARE!!!
900 225. RSG Poinsettia chocolate set w/6 cup and saucers. Rare set!!
1400 226. Um RSP satin finish Bowtie mold cider pitcher w/Tiffany bow. Very rare!
750* 227. RSP 15 pc. Child's tea set, Man in Path and Shepherdér décor. Has a couple tiny nicks. Very Scarce!
- 110 228. Um RSP Chestnut mold chocolate pot.
175 229. Um RSP Chestnut mold 3 pc. Tea set. (tea pot, creamer and sugar.)
255 230. RSP Icicle mold 3 pc. Tea set w/Water Lilies décor. Tiny nick on sugar.
125 231. RSP 10" cicle mold bowl w/Water Lilies décor.
300 232. RSP 6 pc. Berry set, Honey Comb mold w/Water Lilies décor.
150 233. RSP satin finish Lily of the Valley chocolate pot.
50 234. RSP satin finish Lily of the Valley creamer/sugar.
25 235. RSG 7" floral handled candy dish.
30 236. (2) Early Years creamers. Floral.
75 237. (4) Um RSP 5" Mill Scene plates
120 238. Um RSP 4" Diana the Huntress bottle vase.
120 239. Um RSP 4" Snow Birds covered box.
45 240. Beehive mark Lady with Dog cup and saucer.
145 241. RSP Steeple mark cobalt and floral 10" cake plate.
45 242. Um RSP 10" floral cake plate.
65 243. Um RSP Iris Variation floral 10 1/2" cake plate.
30 244. Um RSP 7" mold 343 cobalt and floral plate.
65 245. Rosenthal cobalt portrait plate.
25 246. Royal Vienna Beehive 7 1/2" portrait plate.



Welcome New Members

Dirk & Sue Soulis
P.O. Box 17
Lone Jack, MO 64070

Keith & Pat Meyer
11 No. 1 Green Drive
St Charles, MO 63303

Murriah McMaster
2901 Broadway
Galveston, TX 77550

Bob & Leilani Harper
Po Box 367
Astor, FL 32102

Gary & Roxanne Mankin
1913 Hampshire
Grand Prairie, TX 75050

Suzanne Cummings
127 S Franklin St
Moweaqua, IL 62550

Barbara Kinder
Po Box 576
Versailles, KY 40383

Dale L. Miller
6201N - 1100 E County Line Rd
Peru, IN 46970

Barb Olson & Jr
P.O. Box 385
Viborg, SD 57070

Tom Rouch
5620 - 2 Woodshire Drive
Ft Wayne, IN 46835

Rob & Helen Schlegel
9212 Gleannloch Drive
Indianapolis, IN 46256

Paul & Wilma Zehr
315 E Seventh
Gridley, IL 61744

Carolyn & Terry Tanner
4529 N. 76th Ave
Phoenix, AZ 85033-1236

Debbie Young
3616 Penn Street
St. Joseph, MO 64507

Angela & Jeff Montpas
13634 Thomapple
Perry, MI 48872-8111

Tim Robbins & Karen Schultz
311 Blue Mountain Lake
East Stroudsburg, PA 18301

Brian Kanealy
5101 Beverly Rd SW
Cedar Rapids, IA 52404

Fay J & Marsha K Waterbury
12509 W Birch Lane
Wichita, KS 67235

We Missed You, Ladies!



Just a little note to let Jenny Lou Huston, TX, Board Member/Past President and Leslie Schultz, IA, Secretary, that their absence did not go unnoticed! We missed you at Convention this year and your input at the Board Meetings.

Jenny Lou and husband Pat Huston attended a grandchild's wedding, while Leslie Schultz was very busy playing hostess at her and her husband Linn's bed and breakfast inn in Lost Nation, Iowa. Ladies, we look forward to seeing you next year!

With Sincere Sympathy

Andrew Weimer of Normon, OK, 15 year old grandson of Carl and Phyllis Leohn of Medina, Ohio died Aug. 12, 2004 in Medina. Andrew was the son of Tamra and Bert Weimer of Norman OK, and nephew of Sue and Jon Jaroska and Doug and Leslie Leon of Medina, OK. Memorial Services were held in Norman OK on Aug. 21, 2004.



Future Conventions

2005 CONVENTION:
Embassy Suites
Kansas City, Missouri

2006 CONVENTION:
Sheraton
Novi, Michigan

2007 CONVENTION
The Illinois Club has asked to host this Convention.

2008 CONVENTION
Kentucky - TBA

Regional Club News



KENTUCKY-TENNESSEE

RS PRUSSIA CLUB

Next Meeting:

Saturday October 23, 2004 at 3 pm (central)


Dinner served at 6 pm

Location: **Holiday Inn University Plaza** *

1021 Wilkinson Trace

Bowling Green, KY (270-745-0088)

Theme: Cups and saucers; Child's sets



* Please note that this is a different location than past meetings. Take I-65 to Exit 22, turn west towards town, go down to light #3 and turn right onto Wilkinson Trace. The Holiday Inn is on the left. We will be meeting in Salon C which is located on the first floor.

HEARTLAND RS PRUSSIA CLUB

FALL 2004

CONVENTION

November 5, 6, & 7

Ramada Inn Airport

Omaha, Nebraska

Reservations:

402-342-5100



Bring your favorite RSP pieces, goodies for the hospitality room, and a prospective new member (guest)!